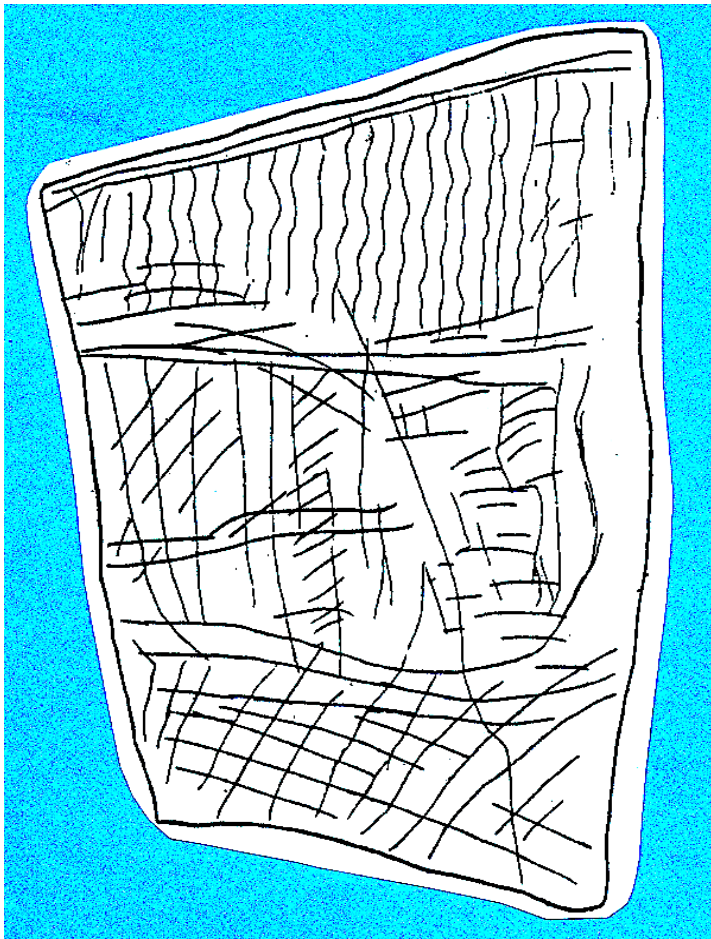


... -5.9.-Textiles. Weighted-Upright Loom.

... [FORMAT] . Written Magdalenian-V- Language of la Cueva de los Casares, Spain. Bølling. 13,000 to 11,750 BC

Vertical, warp-threads, are first set on the loom. They are usually the strongest and most durable. Note that this document and almost certainly all others in these -ca.12,500 BC Bølling Warm Interval inscriptions from Spain's **Cueva de los Casares** were made by women. The same "trousers" symbol is used at Gönnersdorf and Höhlenstein.



UPPER REGISTER
START STORY @ TOP LONG-FIBERS AND YARN

LINK-LINE-VIA WARP to [conjunctive] LEAD-LINE

CENTRAL-REGISTER

[VERBAL] SHE-SITS FIRST FOR THE WARP SHE-SPINS ON HER THIGH TO-USE THE

SOFT-WOOLLY-YARNS-OF-THIS ANIMAL TO WEAVE HORIZONTAL WOOF PATTERN USES WARP OF ABOVE

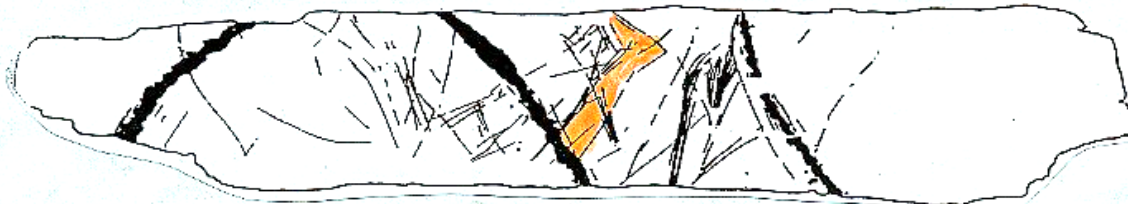
LOWER-REGISTER

[VERBAL] SHE-TAILORS WINTER TROUSERS .FOR WINTER BOOT-TOPS FOR TROUSER LEGS

[VERBAL] WHAT'S WOVEN IS CUT-TO-SIZE TAILORED [VERBAL] FROM BONE WITH-BONE NEEDLES IS STITCHED

-5- Commerce in Textiles. Wool Traders.

[FORMAT] & [TRANSLATION] Magdalenian Vale Do Côa, Ribeira de Piscos, Rocha -15- Portugal.



VALE DO COA
Penascosa Rocha -15-

Traveling Wool Traders

Best interpretation by reading from left-to-right. This MAGDALENIAN [BOLLING] style is unique and may be an ancestor of AZILIAN scripts many of which we read as commercial agreements. The agreements often being between textile workers: spinners [spinsters] weavers and tailors, who are sedentary and hunters who travel a great deal.

We interpret certain styles of AZILIAN [ALLEROD, PRE-BOREAL and even BOREAL] as the direct ancestors of both carved and later impressed clay tally stones used in Europe, N.Africa, the Iranian Plateau, S.Caucasus and mesopotamia.

<p>upper left -1- start chronicle here</p>	<p>left end--and--center -2- heavy line slopes left heavy line slopes right Together make up a SOLAR AZIMUTH</p>	<p>upper left -3-Traveler carries wool</p>	<p>lower left -4- spears</p>
<p>-5- geographic lead-line JOURNEY</p>	<p>-6- lead line JOURNEY</p>	<p>-7- ? The TRAVELER[S] bring long fibers (hair)</p>	<p>-8- of the beast[s] WOOL is brought by the TRAVELERDS</p>
<p>-9- for the spinning and WEAVING person[ae]</p>	<p>-10-count-3 (of what?) [? ?LUNAR MONTHS ??] and count 4 (of what?) [?? LUNAR WEEKS ??] or [3 units of HAIR and 4 of WOOL ??]</p>	<p>-11-PERSONA and her assistants spin fibers, plait yarn</p>	<p>-12-PERSONA and her assistants make twine, cords and ropes</p>
<p>-13-PERSONA[S] weave</p>	<p>-14-PERSONA[S] make TOOLS</p>	<p>-15-bones and hoofs</p>	<p>-16-of the beasts FRAMED as SQUARE</p>
<p>-17-WINTER HOUSE</p>	<p>-18-of the beasts hair</p>	<p>-19-make a CARPET probaby of felt</p>	<p>-20-lead-line: with outline of b beasts snout: "Fibers and wool, hide of the beasts used to make household comforts</p>
<p>-21-link-line from head of beast: "products of the beasts and tools to make them</p>	<p>-22- The small engraving with few symbols is almost certainly CALENDRIC. Similar symbols are very common and widely used ATLANTIC, BOREAL and SUB-BOREAL (c.5,900 to c.2,800BC). The "CANE" is occasionally- but widely used- during the BOLLING 9c.12,500BC</p> <p>-A- CANE stands for a winter or summer solstice when the sun reverses its descent toward the horizon or ascent toward the zenith</p>	<p>-B- fragment of reversed EQUINOX CANE SOLY PICE</p>	<p>-C- EQUINOX</p>
<p>-21-link-line from head of beast: "products of the beasts and tools to make them</p>	<p>-22- The small engraving with few symbols is almost certainly CALENDRIC. Similar symbols are very common and widely used ATLANTIC, BOREAL and SUB-BOREAL (c.5,900 to c.2,800BC). The "CANE" is occasionally- but widely used- during the BOLLING 9c.12,500BC</p> <p>-A- CANE stands for a winter or summer solstice when the sun reverses its descent toward the horizon or ascent toward the zenith</p>	<p>-E- Indicate CRESCENT moon on solar EQUINOX symbol</p>	<p>-D- mark position of LUNATION in solar year</p>

-5- Commerce in Textiles. Wool Traders.

[FORMAT] & [TRANSLATION]Magdalenian Vale Do Côa, Ribeira de Piscos,Rocha -15- Portugal.



<p>-23-probably three LUNAR WEEKS during the month of SOLAR EQUINOX</p>	<p>-23-HAIR is probably the forth-LUNAR WEEK during the month of SOLAR EQUINOX</p>	<p>-24- ?? at EQUINOX ??</p>	<p>-25- DEER'S Head count-4 count-3</p>
<p>right end -27-lead-lines make tools for deer hunt</p>	<p>right end -28-butcher in the field</p>	<p>-29-carry to camp</p>	<p>-30-haunch meat of the deer</p>
<p>-31-long bones and hoofs of the deer</p>	<p>-32-hair and wool of the deer</p>	<p>-33-?? spinners and weavers use deer hair and flybers for making household comforts such as felt-carpet(s) ??</p>	<p>-34-link-line to long lead-line symbol of beasts</p>

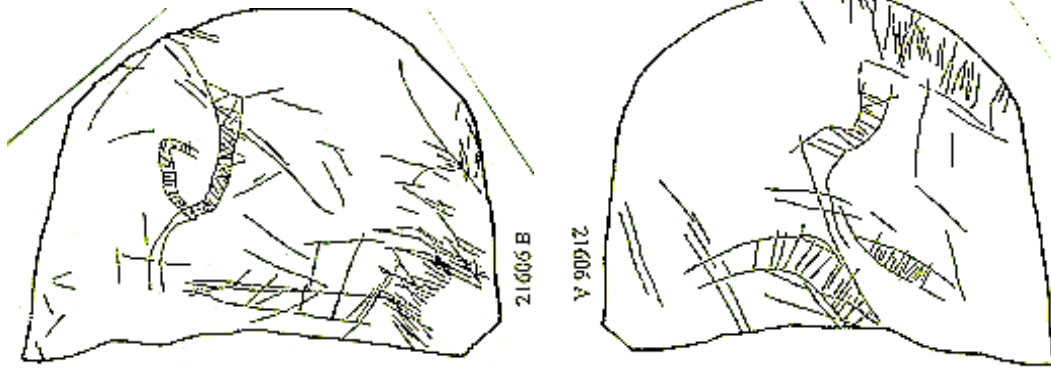
The smaller panel has two heavily-inscribed sloped to the right. They probably represent the weeks of an equinox when animals are fatter and hunting is good.

<p>left end -35- count-7 lines that are near vertical</p>	<p>across inscription -36- count-7 lines that slope to right</p>	<p>right end -37- ?? concerning hairs and wool ??</p>	<p>-38- of DEER ??</p>
<p>39- HAIR and WOOL</p>	<p>-40-long lead-line</p>	<p>-41-PERSONA ONE with wool and hair of the deer</p>	<p>-42-PERSONA TWO 1 spurs for PERSONA ONE</p>
<p>-43- PERSONA THREE makes fire with five bow</p>	<p>-44-of CORE STONES make TOOLS</p>	<p>-45-Haunch MEAT</p>	<p>-46-lead-line to HIDE and/or FUR preparation</p>
<p>-47-possible PERSONA ??</p>	<p>-48-lead-line to deer that are hunted</p>		

-5- *Textile Commerce in Textiles.*

-20- COMMERCE IN TEXTILES

[FORMAT]. *Spanish Magdalenian, Parpalló Site*, Bolling. -I- and -II- 13,000-11,750 BC



[TRANSLATION] :LONG-MAMMOTH HEAD WEAVE SHE SPIN ? WOOL? FOR SHE (WHO) WEAVE (AND) CUTS TO LENGTH TO WEAVE

WEAVER USES FOR (VERTICAL) WARP & USES DEER'S-WOOL FOR (HORIZONTAL) WOOF & BOVINE WOOL

OF HOOFS MAKES WATERPROOFING USES ANTELOPE-WOOL ? (IN VAT?) AT LOOM (WOVEN) CLOTH

THAT SHE QUILTS SHE YOUNG HELPER [STUFFS-QUILTED POCKETS & CHANNELS] WITH DUCK & GOOSE DOWN

[TRADERS] (WITH) CUT LONG HAIR (WITH) DOWN (WITH) WOOL, HAIR ? ? ? TRADER

CROSSES GEOGRAPHIC-RIVER [TRADES THINGS AND PIECE OF] MAMMOTH TUSK HE RECEIVES QUILTED GARMENT

[VOCABULARY] antelope, antelope-wool, cloth, cut, deer, deer's-wool, down, duck, duck-down, dye, fiber, garment, GEOGRAPHIC [river about Parpalló Mountain], goose, goose-down, hair, helper, hill--[Parpalló Mountain or Hill], hoof, long-hair, long-hair, loom, mammoth-hair, mammoth-tusk, ply, quilt [verb], quilted-garment, river, river-bend, she, spin, trader, tusk, "vat," warp, waterproofing, weave, woof, wool,

[TRANSLATION] : SHE SITS RECEIVED OF-MAMMOTH [OIL FOR] LAMP LAMP WICK COUNT-7 DAYS WITH DUCK-DOWN

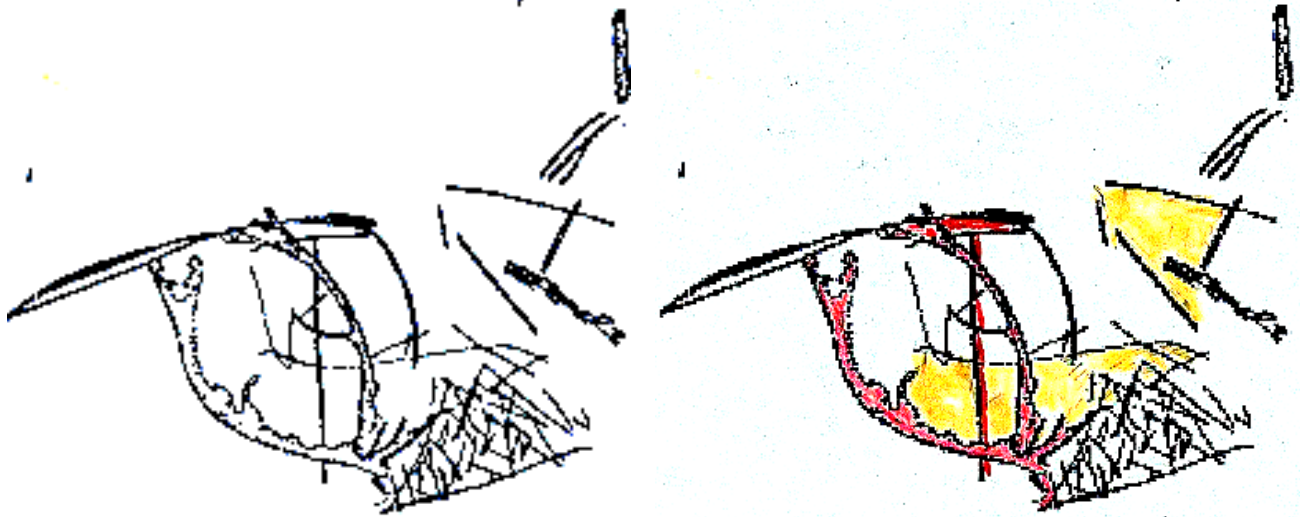
OF QUILTED-DYED-CLOTH MADE WINTER GARMENT COUNT-13 MONTHS DELIVERED TO TRADERS DEPART

[VOCABULARY] cloth, count, deliver, departt, down, duck, dye, fat, garment, lamp, lamp-oil, lamp-wick, lunar-month, make, mammoth, month, oil, quilted, she, sits, trader, wick, winter,

-5₋₂₀—Textile *Contracts: Shoe Maker's Tool.*

-20- [**CONTRACTS**, **COMMERCE IN TEXTILES**, **ANNUAL-RENDEZVOUS**, **CEREMONIAL**]

[**FORMAT**]. *Magdalenian, El Buxa Cave, Asturias, Spain* [The point of this tool could be used to press sinews, thongs, cord and cord made from entrails through holes in hide or leather. Holes in leather tend to close; and coarse, thick cords etc are not easily brought through holes with needles.]



[**TRANSLATION**]^{START WIT THIS} **TOOL** **CUT** **LEATHER** **PREPARE**^{CORD, THONG, SENEW, INTESTINE}

to **STITCH** **FOOT-WARE** **PLY** ? **UPPER?** **DRILL** **HE** **DRILLS** ? **CORD** **PLY** **OF** **GUT**
SHOE **SOLE** **OF** **SHOE** **WATER-PROOF** **FELT-PADDED**^{INNER SOLE} **PERSON**^{MAKES} **FOR** **WINTER**

:[**VOCABULARY**] cord, cut [verb], drill [noun & verb], felt, felt-padded, foot-ware, gut, he, inner-sole, person, ply [verb], prepare, shoe, sole [of shoe], stitch [noun & verb], tool, upper [upper part of a shoe or boot, as distinct from the durable sole], water-proof, winter,



Contracts written on:

-5₋₂₀—Textile *Darning-Egg ? Press-Felt ?*

-20- [CONTRACTS, COMMERCE IN TEXTILES, ANNUAL-RENDEZVOUS, CEREMONIAL]

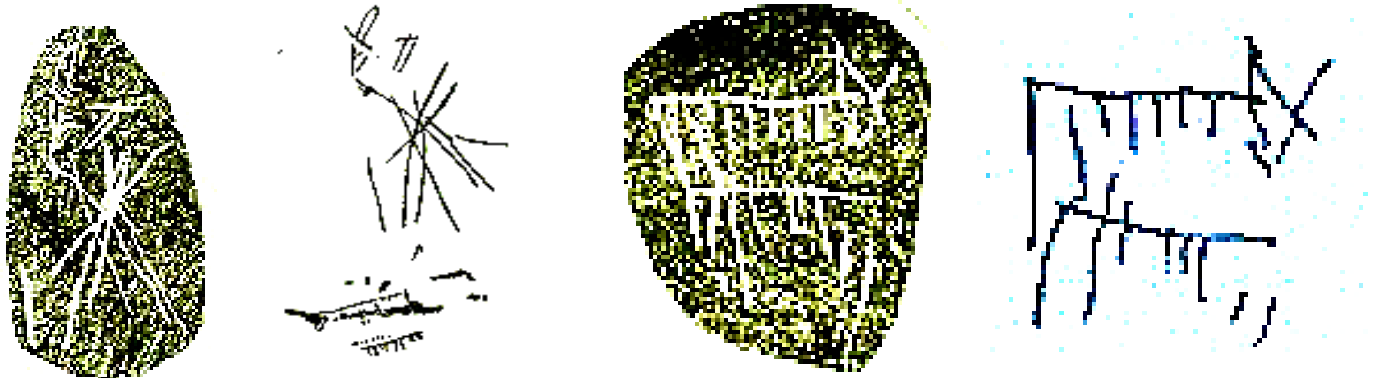
[FORMAT]. *Magdalenian, El Buxa Cave, Asturias, Spain*

[TRANSLATION]

CUT SCRAPE COMB^{TO ALIGN} PRESS FELT DUCK & GOOSE-DOWN ? ? ? QUILT



[VOCABULARY] align [verb], comb [verb], cut [verb], down, duck, felt, quilt, scrape,

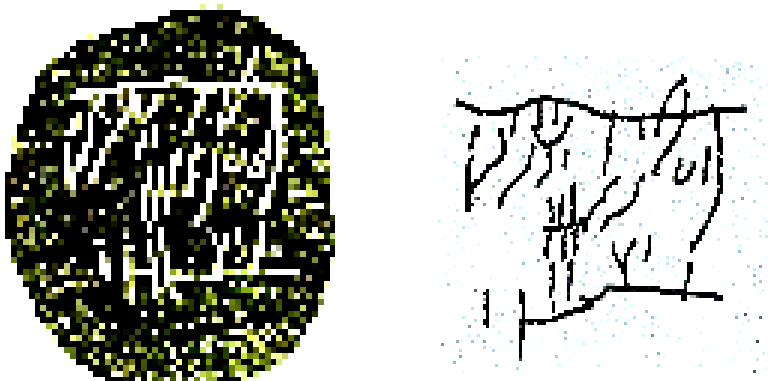


[TRANSLATION]

SHE. WITH HELPER OF ? ANIMAL-FIBER WEAVE ? ? ?



[VOCABULARY] animal, fiber, helper, she, weave



[TRANSLATION]

SHE FTRFR SPTN UNDER LAMP PERSON SHE SITS MAKES ? EFT ? ? SPTN

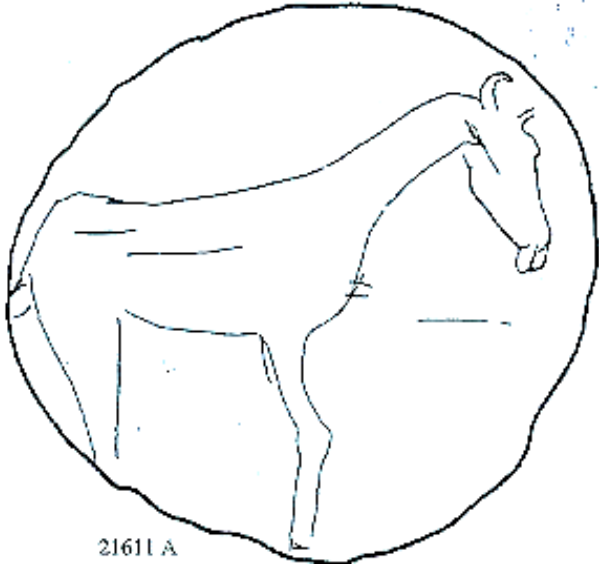


[VOCABULARY] felt, fiber, lamp, person, she, sits, spin [verb]

-5- *-20-Textile Contracts.*

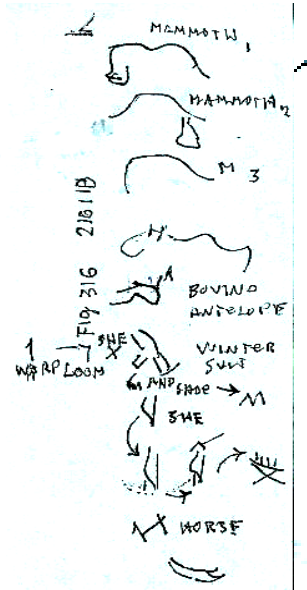
-20- [**CONTRACTS, COMMERCE IN TEXTILES, ANNUAL-RENDEZVOUS, CEREMONIAL**]

[**FORMAT**]. *Magdalenian, Isturitz Site, France* Probably **MAMMOTH -1-** represents summer mammoths **MAMMOTH -2-** the southward early winter migration during which an annual mammoth hunt takes place and **MAMMOTH -3-** the northward spring vacation, as polar easterlie winds switch to west winds, the earth warms, rains fall, and the vast long-grass cold prairie estending through Europe, across Asia, on across Beringia, and on into North America's great central plains suddenly grow.



21611A

[symbol selection: by computer filter.]



[**TRANSLATION**] This is a contract between a lady and her helpers who stay in a village with a hunter who regularly supplies them with food; and annually supplies them with hides, hair, wool, down and other commodities. Ladies, wives, and daughters toil to make clothes, comfortable homes, and care for children. Always paced by a seasonal cycle or glacial winters "iron frosts;" migrations of people, animals and periodic "state fair-like" trader's rendezvous. These compare with, but are more than the fall rendezvous America's mountain men held in the Rocky Mountains.

MAMMOTH -1-	MAMMOTH -2-	MAMMOTH -3-	BISON	ANTELOPE	TO SPIN
ON WARP TO WEAVE SHE WINTER-SUIT & HIDE FOR SHOE SHE HORSE-HAIR WEAVE ON LOOM					
	SOFT HAIR and WOOL CUT TO WEAVE IN FALL MAMMOTH AND DUCK FAT RENDERED				
FOR JAMP-QJI SHE SPINS WICK					

[**VOCABULARY**] [note: As I transcribe both visually and with what the computer program grinds out as symbols, signs, probable combinations etc.-----I am continually aware that there is a grammar here, and that I am changing it. Occasionally it's on the verge of being quite clear, and then I lose it. there is an old grammar here. With patient following of lead-lines and link-lines it will eventually emerge- and things will be readable as written--- rather in these transliterations.]

bison, calf, cut, hair, hide, horse, horse-hair, loom, mammoth, she, shoe, spin, warp, weave, wool